



Anti-Bullying Month

One in five students report being bullied, and of those students, 41% believe the bullying will happen again. Students who are bullied are at an increased risk for depression, anxiety, sleep difficulties, lower academic achievement, and dropping out of school. The good news is that school-based bullying prevention programs decrease bullying by up to 25%. We want what's best for your students, and we're here to help make your district a safe and supportive learning environment.

Visit publicschoolworks.com



Bullying Prevention

Prevent, Recognize, and Respond

Bullying is aggressive, mean, and comes in many forms, none of which are acceptable. It has serious and lasting effects on the mental health and overall well-being of youth, including kids who are targets of bullying, kids who perpetuate the bullying, and those who witness such acts. In fact, bullying can cause physical, psychological, social,

or educational harm for its targets. Bullying, and failing to address it, hurts the quality of a school environment, and creates unsafe conditions for students that inhibits learning and growth.

With October being Anti-Bullying Month, now is a great time to provide your staff the training they need to help them recognize and respond to student bullying. To learn more, you can assign or enroll in any one of our number of bullying-related courses such as Bullying Prevention - Basics for Educators, Bullying - The ABCs of Bullying, Transportation (Bus Drivers) - Bullying Awareness, and more. By learning what bullying looks like, why it happens, who its likely perpetrators and targets are, and its warning signs, you can better respond to bullying and ultimately help prevent it from occurring in your school.



CARRIE'S CORNER

*Building a safe and supportive environment is critical to student success and is tied to attendance, academic achievement, and graduation rates. **Click here** to watch a short video on how to recognize bullying, types of bullying, the five response steps, and how you can help. Common characteristics of a positive climate are:*

- Engagement (building a community)
- Safety (emotional and physical)
- Environment (instructional, physical, mental, discipline)

Identifying a Student in Distress

Training Teachers

The average K-12 student will spend 1,227 hours or more per year at school, with many of those hours spent with teachers. As a result, educators can build strong relationships and create a safe space for their students. Teachers play a critical role in helping to identify students who are in distress and getting them the right resources.



If you believe a student is in distress, there are several things you can do immediately. It is important to acknowledge, validate, and respect what the student is sharing with you. Use nonjudgmental language that echos your concern for the student's well-being. Be prepared to act by following what is outlined in your district's crisis policy. Share the Suicide and Crisis Lifeline (988) which connects a person with a trained counselor to receive support. For emergencies, please call 911.

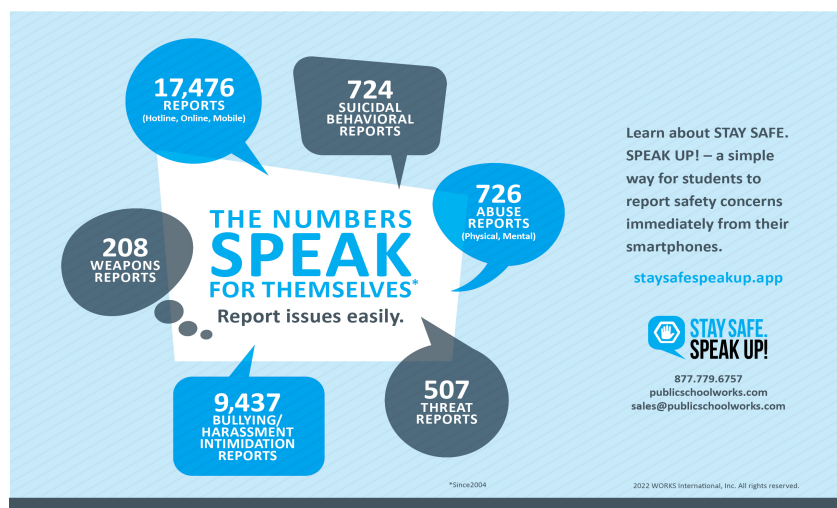
Giving teachers the right tools, such as training, can help keep a student safe. We offer several courses that can help teachers identify a student in distress. Our courses cover trauma informed care and response, suicide prevention, bullying, and mental, emotional and behavior disorders in students and much more. Visit our website to learn more about the training we offer to empower teachers to be the voice and advocate for their students.



WORKS Announcements

New Customers Joining The Organization

- A+ Childrens Academy
- Alamosa School District
- Fairfield Township School District
- Jefferson County ESC
- Lowellville School District
- Madison County Schools
- Merced City School District
- Mother Maria Anna Brunner Catholic School
- Niles City Schools
- Sacramento County Office of Education
- Solon Academy
- St. John XXIII Catholic School
- St. Mary's City School District
- Strongsville Academy
- Virtual Preparatory Academy of Florida
- Westlake Academy
- Woodland JUSD



Stay Safe. Speak Up!

Student Safety Reporting System

Fear of peer disapproval is one of the biggest barriers to students reporting bullying. Even if students want to report, they may be scared to or not know how to do so in a way to avoid retaliation. Stay Safe. Speak Up! Student Safety Reporting System is a program within our award-winning StudentWatch suite that allows students, parents, and community members to confidentially report bullying, harassment, intimidation, and other safety concerns 24/7/365 via our hotline, mobile app, or online. With this program, the very devices students use every day become a pivotal tool for combating the negative effects of bullying and bystander behavior.

Anti-Bullying Month serves as an opportunity and a reminder for districts to thoroughly examine best practices for creating an environment that fosters inclusion and respect. If your district already utilizes the Stay Safe. Speak Up! Student Safety Reporting System, take this time to remind staff and students about the availability of this tool and the importance of reporting. You can also reach out to Shawn Toadvine, Manager of Student Programs, with any questions or concerns. If your district does not currently have access to StudentWatch but would like to learn more about how to create a positive school climate where everyone feels safe and welcome, click here.

Please feel free to reach out with any staff or student safety questions or concerns! Contact us at info@publicschoolworks.com

